

## **Supplementary material**

### **Cryptically galled infructescence: a new sheoak gall type in *Allocasuarina luehmannii* and *Casuarina pauper* (Casuarinaceae)**

*Ian T. Riley*

Department of Plant Production and Technologies, Faculty of Agricultural Science and Technologies, Niğde Omer Halisdemir University, Niğde, Turkey. Email: [ian@riley.asia](mailto:ian@riley.asia)

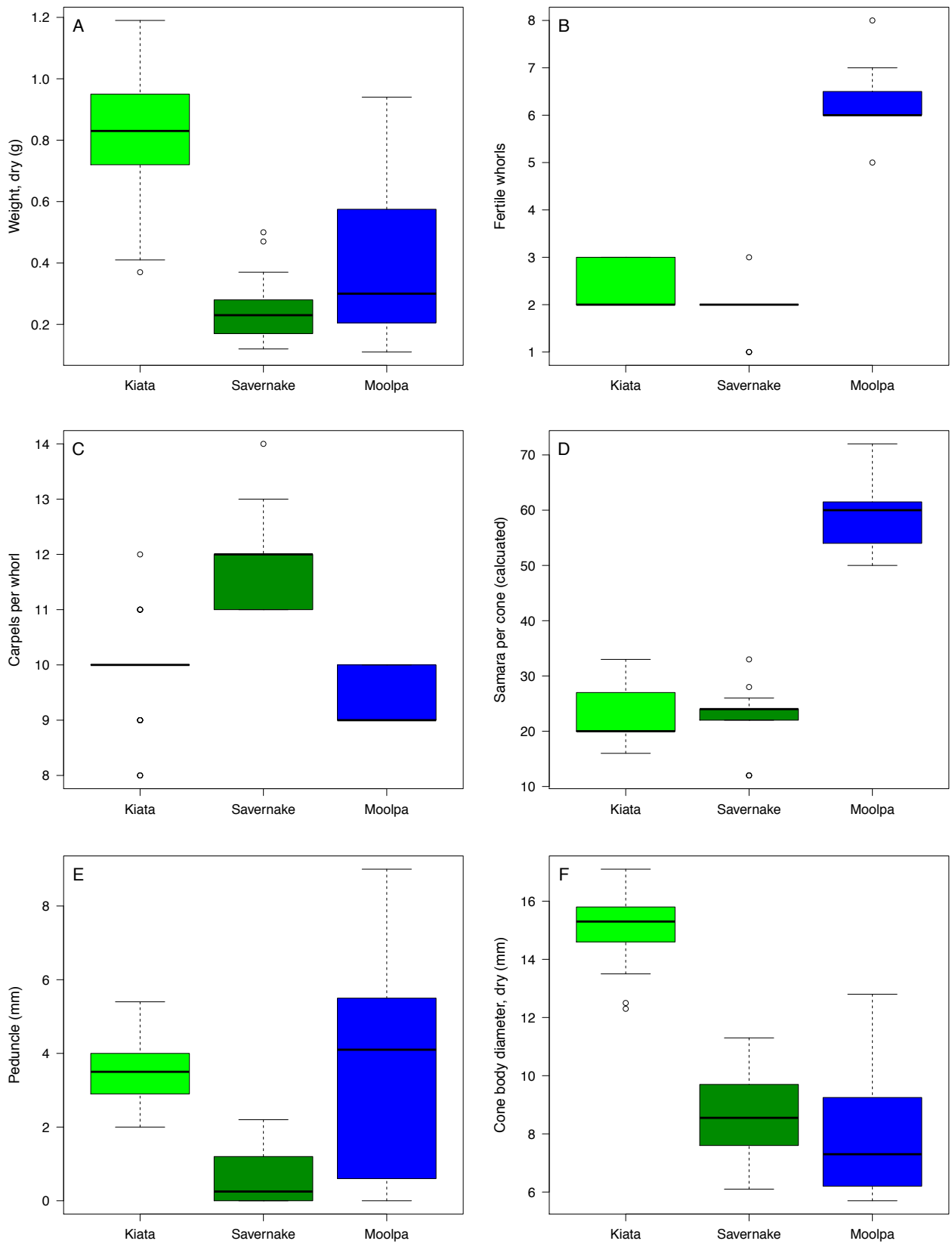
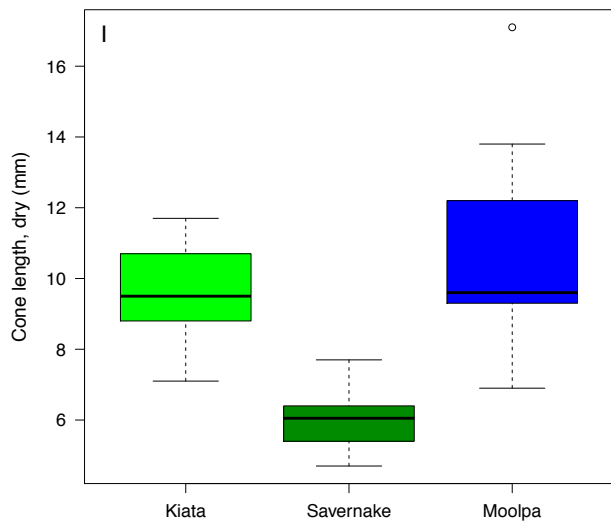
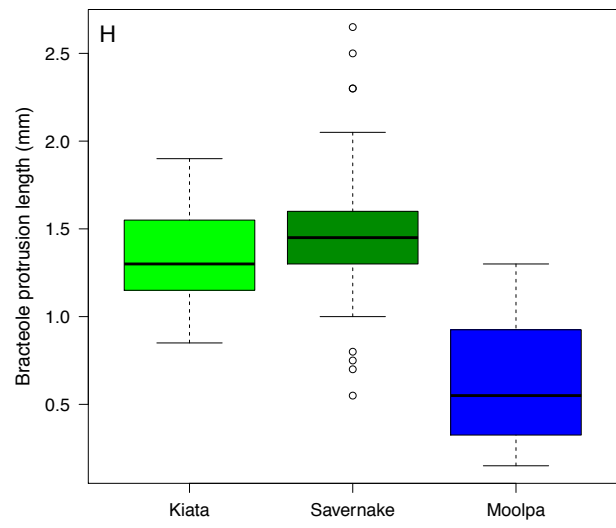
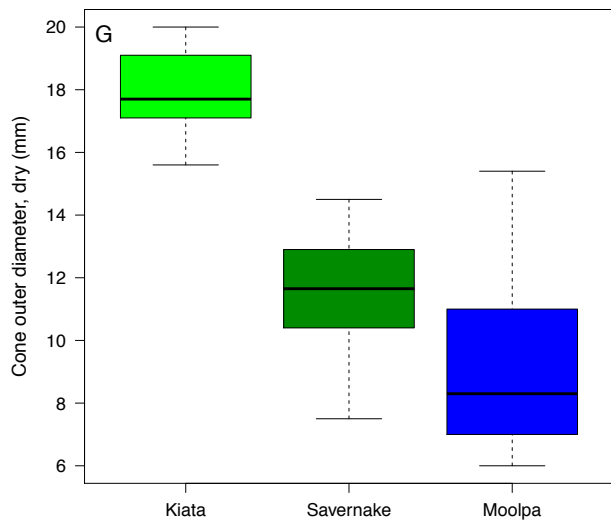


Fig. S1. Boxplots for data presented in Table 1.



**Fig. S1. (Cont.)**