

10.1071/FP20244_AC

© CSIRO 2021

Supplementary Material: *Functional Plant Biology*, 2021, 48(6), 624–633.

Supplementary Material

Changes of lignin biosynthesis in tobacco leaves during maturation

*Zhaopeng Song^A, Daibin Wang^B, Yabei Gao^A, Changjun Li^B, Houlong Jiang^B, Xiaowei Zhu^B
and Hongying Zhang^{A,C}*

^AKey Laboratory for Cultivation of Tobacco Industry, College of Tobacco Science, Henan Agricultural University, Zhengzhou 450002, China.

^BChina Tobacco Chongqing Industrial Co., Ltd, Chongqing 400715, China.

^CCorresponding author. Email: zhangying198215@163.com

Table S1. Primers used for sequence analysis

Primer name	Sequence (5'→3')	Function	Gene ID
<i>NiPAL-F</i>	CTCACTGGTTTTGGTGCTACT	QPCR analysis	107792668, 107786762, 107769293, 107761482,
<i>NiPAL-R</i>	AGGCTGCAACTCGAAAAATC	QPCR analysis	107831213, 107820497, 107802063, 10780256
<i>NiC4H-F</i>	GGCAATCCCTCTTTTAGTCCC	QPCR analysis	107823514, 107812882, 107791262
<i>NiC4H-R</i>	CTCCTACCAACACCAAATGGA	QPCR analysis	
<i>Ni4CL-F</i>	GAACTCAAATCGAACGAATC	QPCR analysis	107803673, 107803813, 107785405, 107814113,
<i>Ni4CL-R</i>	ATGACCCTCTGAAAATTGTTTAC	QPCR analysis	107797004, 107766072
<i>NiCCR-F</i>	CCTCACTGGCTCTGCTAAAACAT	QPCR analysis	107786653, 107804645, 107787492, 107816628,
<i>NiCCR-R</i>	TTCTCTTGTAGGCTCTTCACCG	QPCR analysis	107770552, 107829067, 107815050
<i>NiC3H-F</i>	CGAATTAGCGAAAGTAGCGAGTTTTG	QPCR analysis	107800961
<i>NiC3H-R</i>	GCTAATTGTA CTGTGAATGAATATG	QPCR analysis	
<i>NiHCT-F</i>	CTCAACCCACTCCCAACCAT	QPCR analysis	107772942, 107789426, 107826939, 107809545
<i>NiHCT-R</i>	CTCAACCCACTCCCAACCAT	QPCR analysis	
<i>NiCCoAOMT-F</i>	AATGGTTCTGTGGTGGCTCC	QPCR analysis	107770611, 107797097, 104226583, 104229202,
<i>NiCCoAOMT-R</i>	CGGCGGCACAAGGTAATG	QPCR analysis	104241444
<i>NiCOMT-F</i>	GATGTTGGAGGTGGTCTTGGA	QPCR analysis	107795225, 107809583, 107808034, 107793948,
<i>NiCOMT-R</i>	CTGGTTTCACTGGTAAAATGGC	QPCR analysis	107792974
<i>NiCAD-F</i>	GAGGGTATGGCACCAGAACAA	QPCR analysis	107816761, 107790741
<i>NiCAD-R</i>	GATGTCCCATTGCCTTTGCTAT	QPCR analysis	
<i>NiF5H-F</i>	TTCTCTCAAATCTCGCCGT	QPCR analysis	107811350, 107800782, 107799312, 107792945
<i>NiF5H-R</i>	GTTTTCTCATCTGCCGCCA	QPCR analysis	
<i>NiPAO-F</i>	CTCGTTTTGTACCGGGAC	QPCR analysis	107832568
<i>NiPAO-R</i>	AACCTCACAATCAGCATGGA	QPCR analysis	
<i>NiL25-F</i>	GCTTTCTTCGTCCCATCA	QPCR analysis	L18902
<i>NiL25-R</i>	CCCCAAGTACCCTCGTAT	QPCR analysis	
<i>ProNiC3H:GUS-F</i>	TACGAGCTCCGAATTAGCGAAAGTAGCGAGTTTTG	Vector construction	
<i>ProNiC3H:GUS-R</i>	GGACTAGTGGCTAATTGTA CTGTGAATGAATATG	Vector construction	

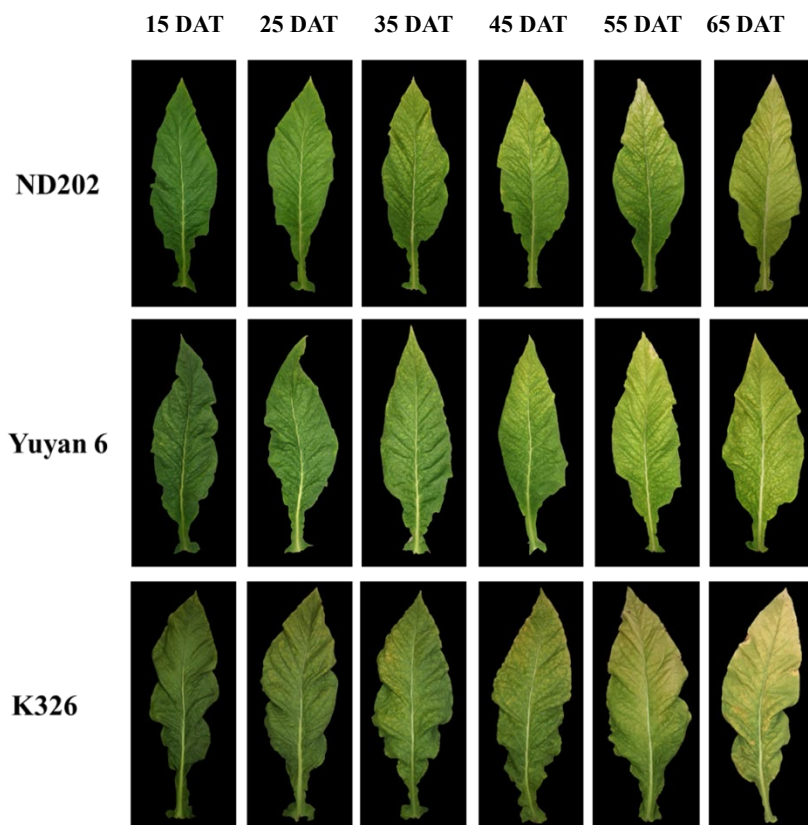


Fig. S1. The characteristics of tobacco leaves at different maturity stages.

cgaattagcgaagtagcgagtttgaacattgatgcataaaacaaaaaagagaaaaaggaataatcatgaaatataat
atgaatgtaataaatgaagtttatataatattattacatcttcttttaagatgagagaactttatattactattaatagtaatga
cgcgagagacccatgagctagcctcgcctacccaaaacgggatggttgaccattcaaaaattggcattgagat
acgagccgaatttgtatgcatgcttattcaagtgactagctagtctgaaagcaaaatatactttcaaatattcctaagatc
ttacttattcttaatatgtgtattaccaccaattatctctcaaaaccaagtaaattggggttggatatacatataaattatcaatgtac
atatcgttccattaaatacatctcaatcaaatcaatacatagtccaatctcctaattattgattgattttatcataaactgatt
agtttactttgggtgtaataactgcaacctccttattttagtttgaaaacatacaatgcgagcttgagcttacacagga
gagttagtcttaataatgaagtaagacgataatgtattaatttattctatttctgtaaaattagtttgaattctgtccaattgaga
taaggatggtatgtttgttagcttagcttattatcaaatgtcgtcacctactgaataatgcagcagcaagctagatatagtagtag
tcgtagcagctaaatcacactattcgttttagttgaatatttctactcagaattattgcaaattcacgtaaattttatctgaatgttc
tttctcaagttaccaatgatcttttgcattgaaaaatactcagttgtcaacagaaaaatagtgatcataactcatataagtg
tttctctcagctcattaatggcatcagcaggagacaagatagatataattttttctttataaattacatatcttactgaataac
gcgatctcaaaagttagatcaaaactagctcctcaatattatgcattgattaatccaatttacggtatectaccattctcagcatta
gcaagggtgttaaatataaaatctatacagtggtgtaaaatattttattatgagataaataaacaatccaataacctcaa
aaaaaaagaaaaagaaaagaaaagagttgccatttggacagaggcattattactgtcaaaagcatttaagagtcaactgg
tcatgccgtaaattataattataaattgtcaaccaaatttatggatcaagaaataaggcaatccttgataaggtcaatgtct
gttatatatggaataatcaactagctagtaatatattttgaagtatcgcagaattgtggtggaatggatagaaactcaacca
gatgttctgggttcgatcttcgaaaagaaagtaaacctattaataggaagcgttctcctcaatggatcttatgcggaacaaa
tataacagattagttgggcccctaatgcgaatatcagatccgcggggaattaaaaaaagaagaagattctaaactaggg
gtggtccactatttcaagttgagcaaaatcataagaatgtgataggatcataatagttataatcatcgttctgtcaattcatgat
aatcattaatctatcaagtaattaaaattttaaataatataaaaaggtacgacttttctttaaagggaatgaaaaaattggtat
ataaaggggcatagcgtgcctcatatcttcccacaaaactccataATG

Fig. S2. The *NtC3H* promoter used in the study.