

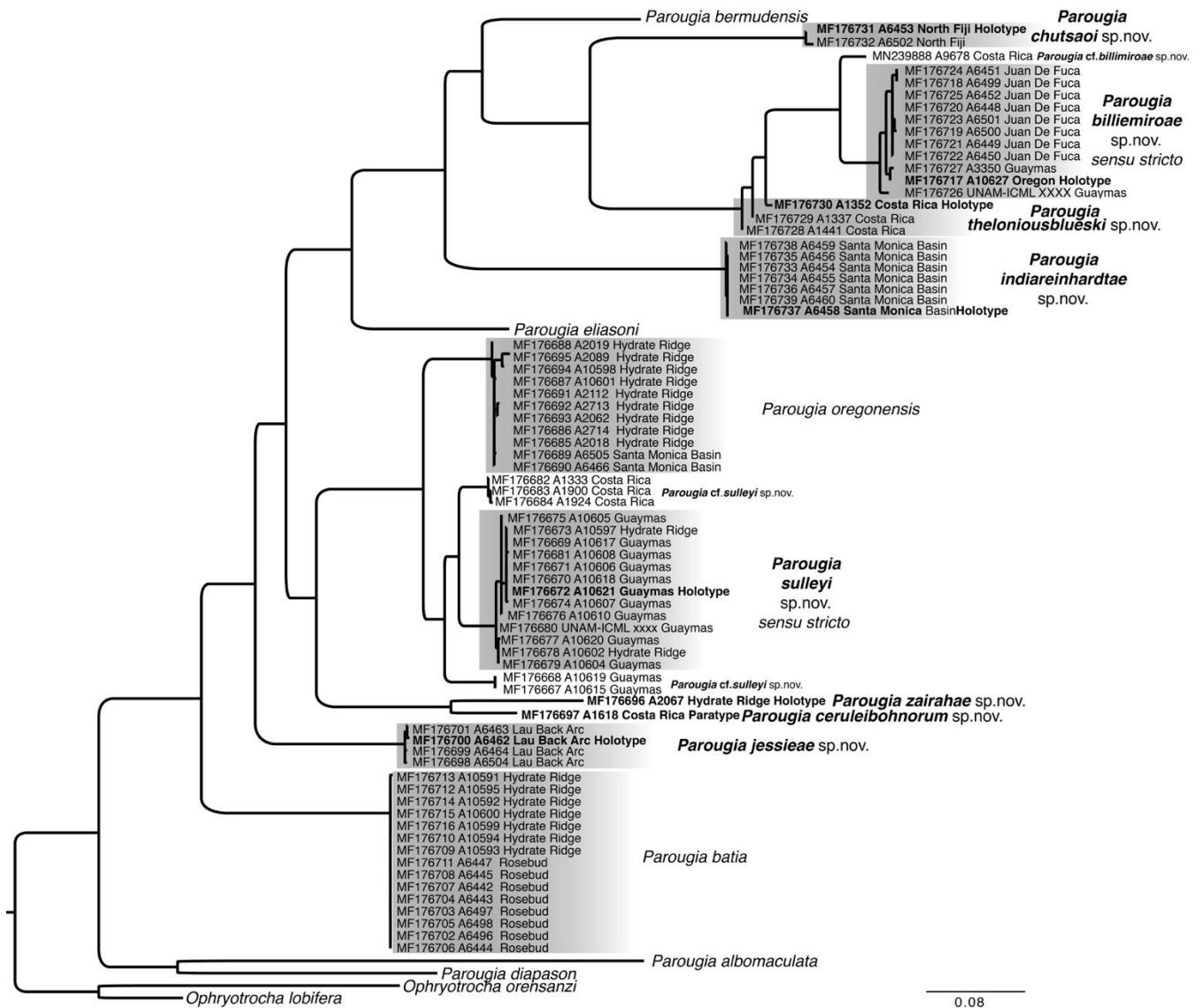
**Supplementary material**

**Phylogeny, biogeography, and systematics of Pacific vent, methane seep, and whale-fall *Parougia* (Dorvilleidae : Annelida), with eight new species**

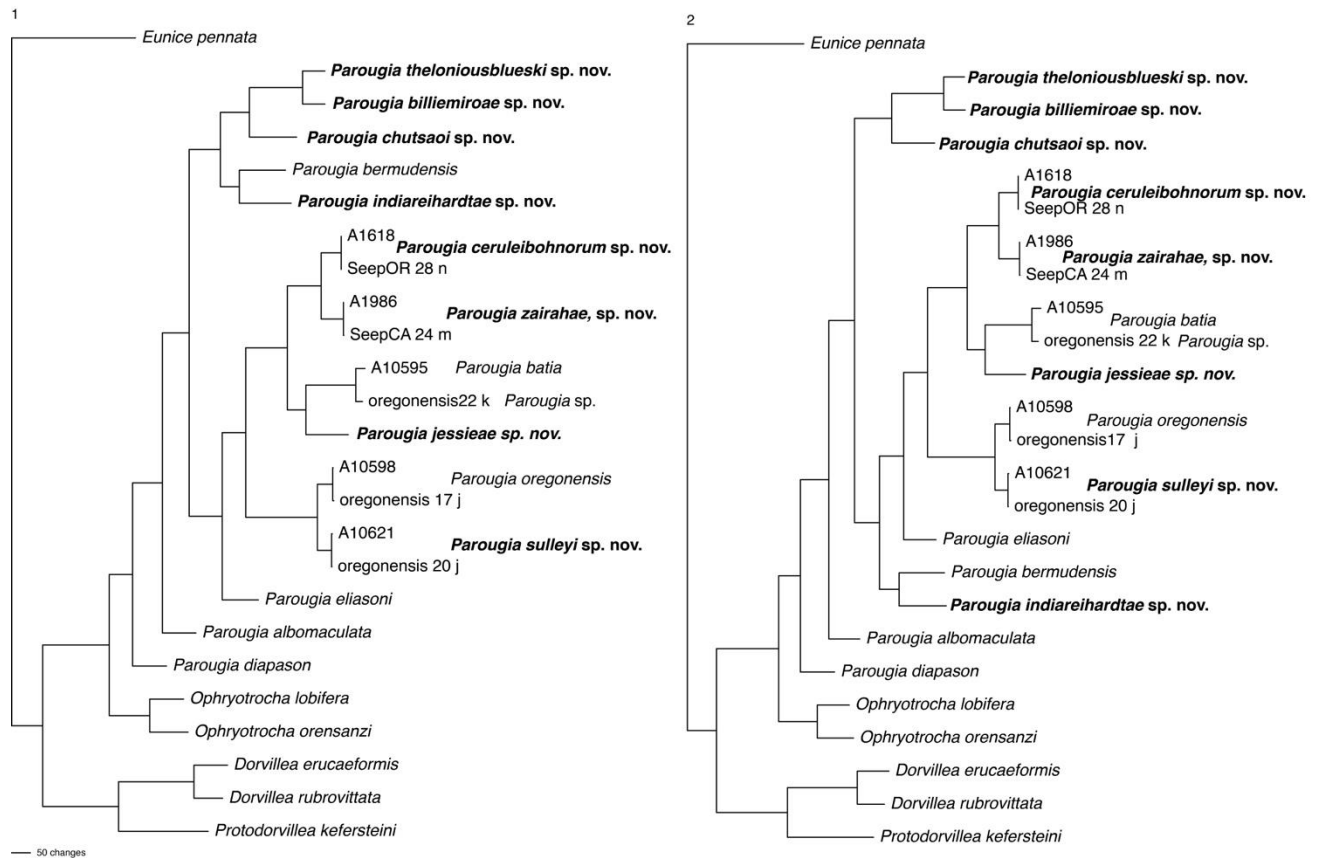
*Nicole K. Yen*<sup>A</sup> and *Greg W. Rouse*<sup>A,B</sup>

<sup>A</sup>Scripps Institution of Oceanography, University of California San Diego,  
La Jolla, CA 92093-0202, USA.

<sup>B</sup>Corresponding author. Email: grouse@ucsd.edu

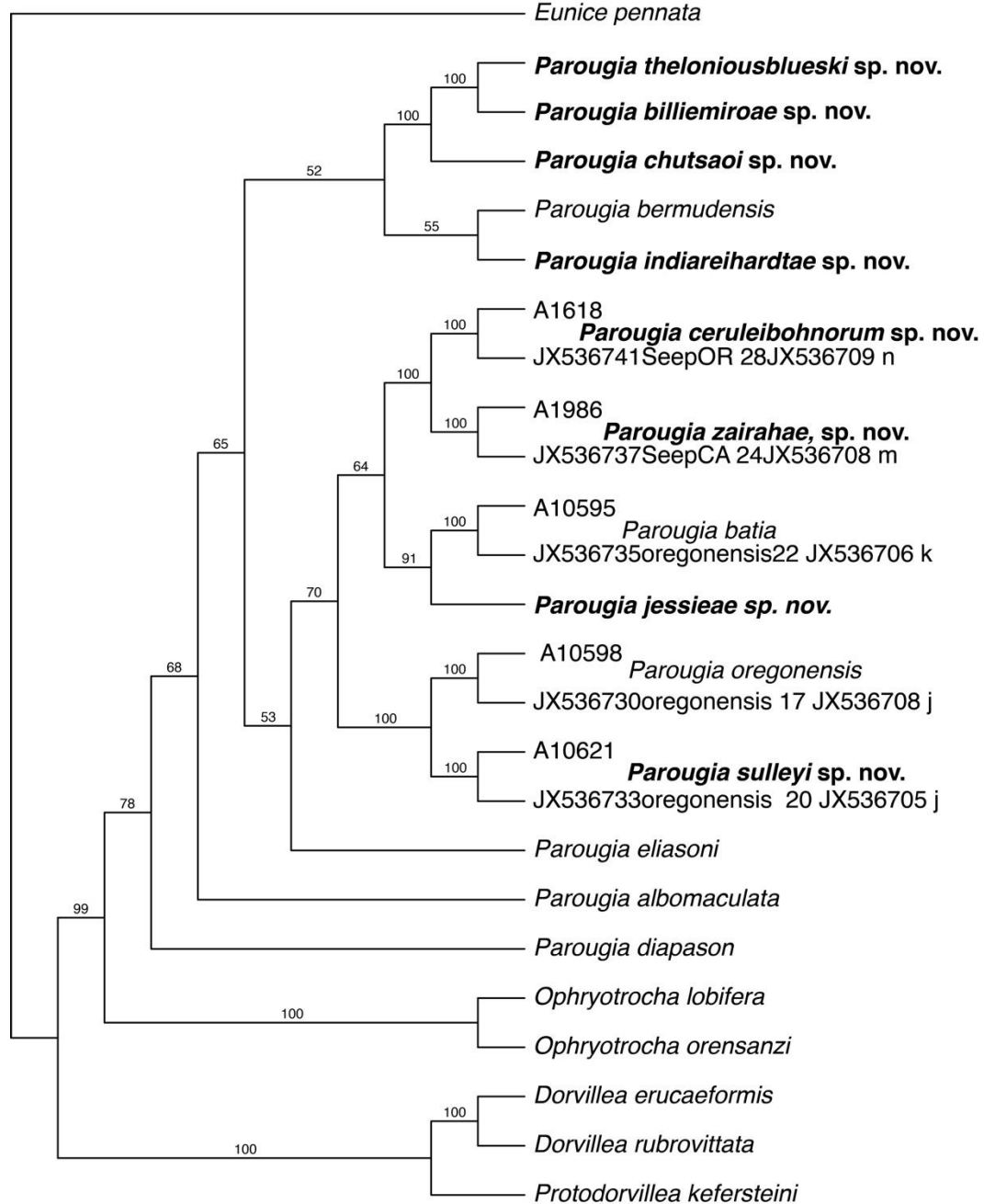


**Fig. S1.** Maximum likelihood tree from COI data for all terminals used in this study. This topology was used to aid in ‘species’ taxon determination.



**Fig. S2.** Two shortest tree of length 4162 generated under maximum parsimony in PAUP\* from 994 parsimony informative characters in the concatenated 5-gene (COI, 16S, Cyt-b, H3, and 18S) dataset.

Bootstrap consensus tree



**Fig. S3.** Majority rule consensus tree of 100 bootstrap replicates generated under maximum parsimony in PAUP\* from 994 parsimony informative characters in the concatenated 5-gene (COI, 16S, Cyt-b, H3, and 18S) dataset.