

Supplementary material

New morphological and molecular data reveal an important underestimation of species diversity and indicate evolutionary patterns in European *Lepidocyrtus* (Collembola : Entomobryidae)

Eduardo Mateos^{A,B,F}, *Daniel Winkler*^C, *Marta Riutort*^{D,B} and *Marta Álvarez-Presas*^{D,B,E}

^ADepartament de Biologia Evolutiva, Ecologia i Ciències Ambientals, Facultat de Biologia, Universidad de Barcelona, Avinguda Diagonal 643, E-08028 Barcelona, Spain.

^BInstitut de Recerca de la Biodiversitat (IRBio), Facultat de Biologia, Universitat de Barcelona, Avinguda Diagonal 643, E-08028 Barcelona, Spain.

^CUniversity of Sopron, Faculty of Forestry, Institute of Wildlife Management and Vertebrate Zoology, Bajcsy-Zsilinszky u. 4, HU-9400 Sopron, Hungary.

^DDepartament de Genètica, Microbiologia i Estadística, Facultat de Biologia, Universitat de Barcelona, Avinguda Diagonal 643, E-08028 Barcelona, Spain.

^ESchool of Biological Sciences, University of Bristol, 24 Tyndall Avenue, Bristol, BS8 1TQ, UK.

^FCorresponding author. Email: emateos@ub.edu

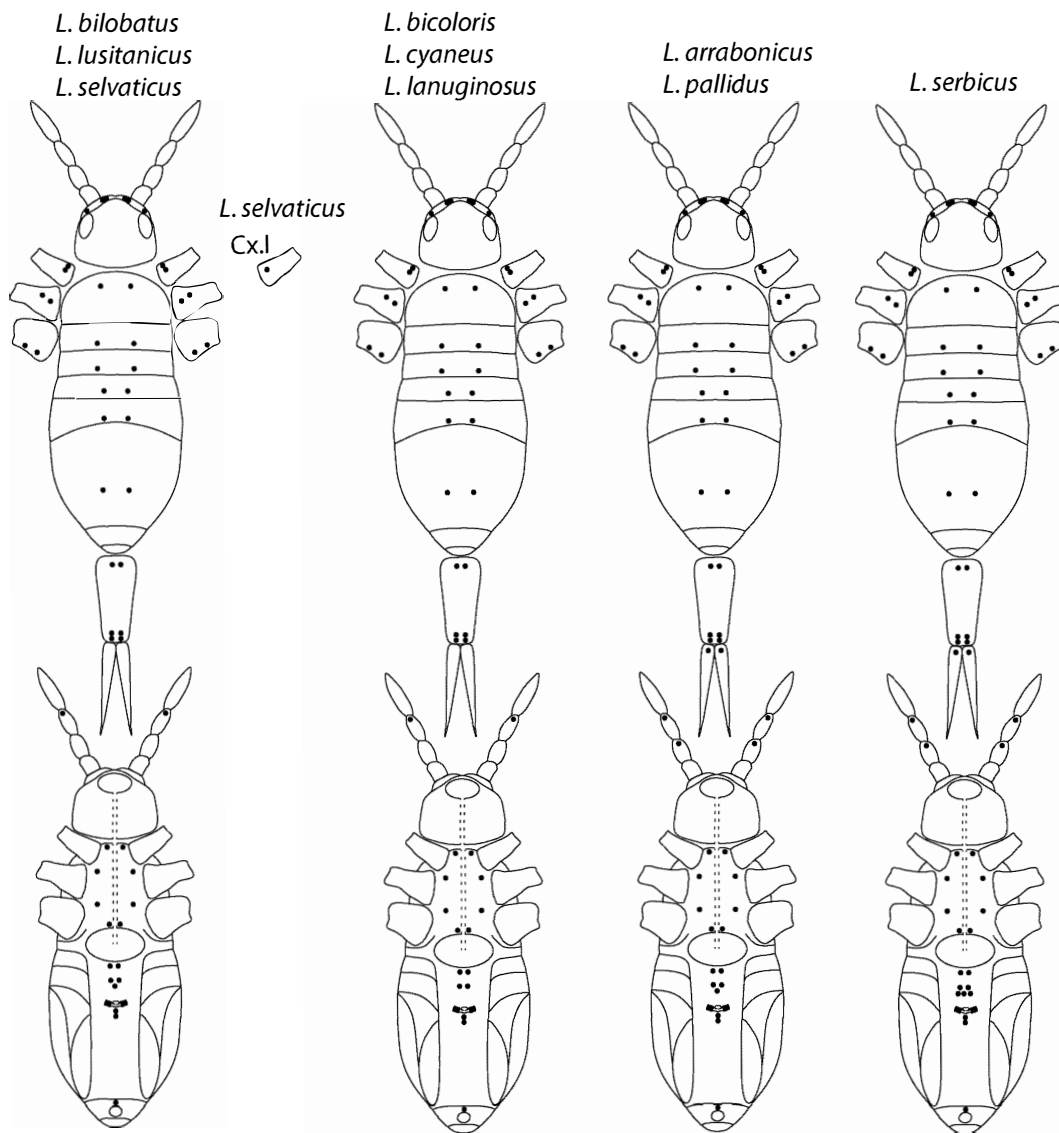


Fig. S1. Distribution of pseudopores (black dots) on dorsal, lateral and ventral positions in *Lepidocyrtus lusitanicus*-group (species *L. bilobatus*, *L. lusitanicus* and *L. selvaticus*), *L. lanuginosus*-group (species *L. bicoloris*, *L. cyaneus* and *L. lanuginosus*), and *L. pallidus-serbicus*-group (species *L. arrabonicus*, *L. pallidus* and *L. serbicus*).

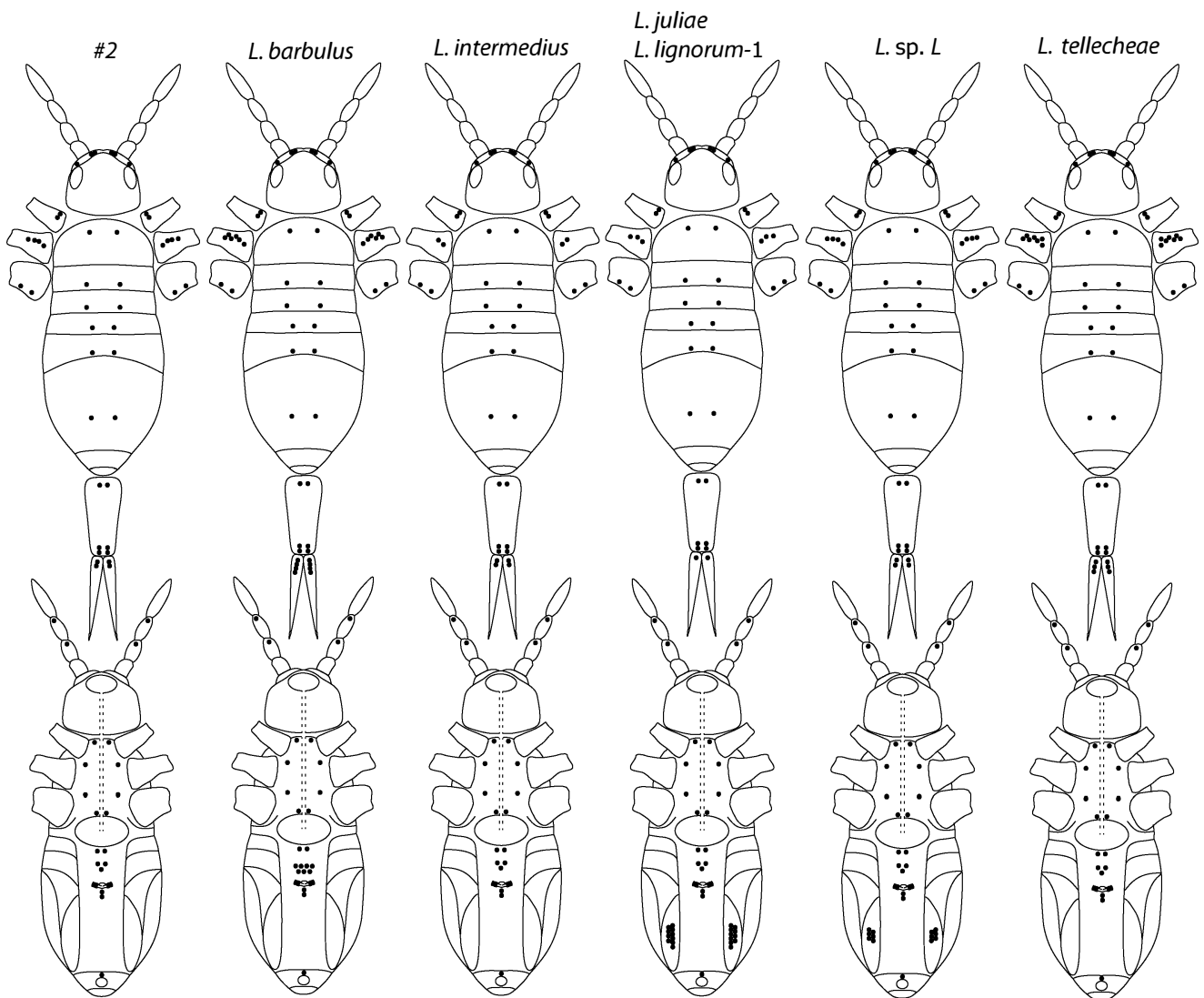


Fig. S2. Distribution of pseudopores (black dots) on dorsal, lateral and ventral positions in *Lepidocyrtus lignorum*-group (species *L. barbulus*, *L. chorus*, *L. intermedius*, *L. juliae*, *L. lignorum*, *L. pulchellus*, *L. sp. J*, *L. sp. K*, *L. sp. L*, *L. tellecheae*, *L. trasei*); #2 include species *L. chorus*, *L. lignorum-2*, *L. pulchellus*, *L. sp. J*, *L. sp. K* and *L. trasei*.

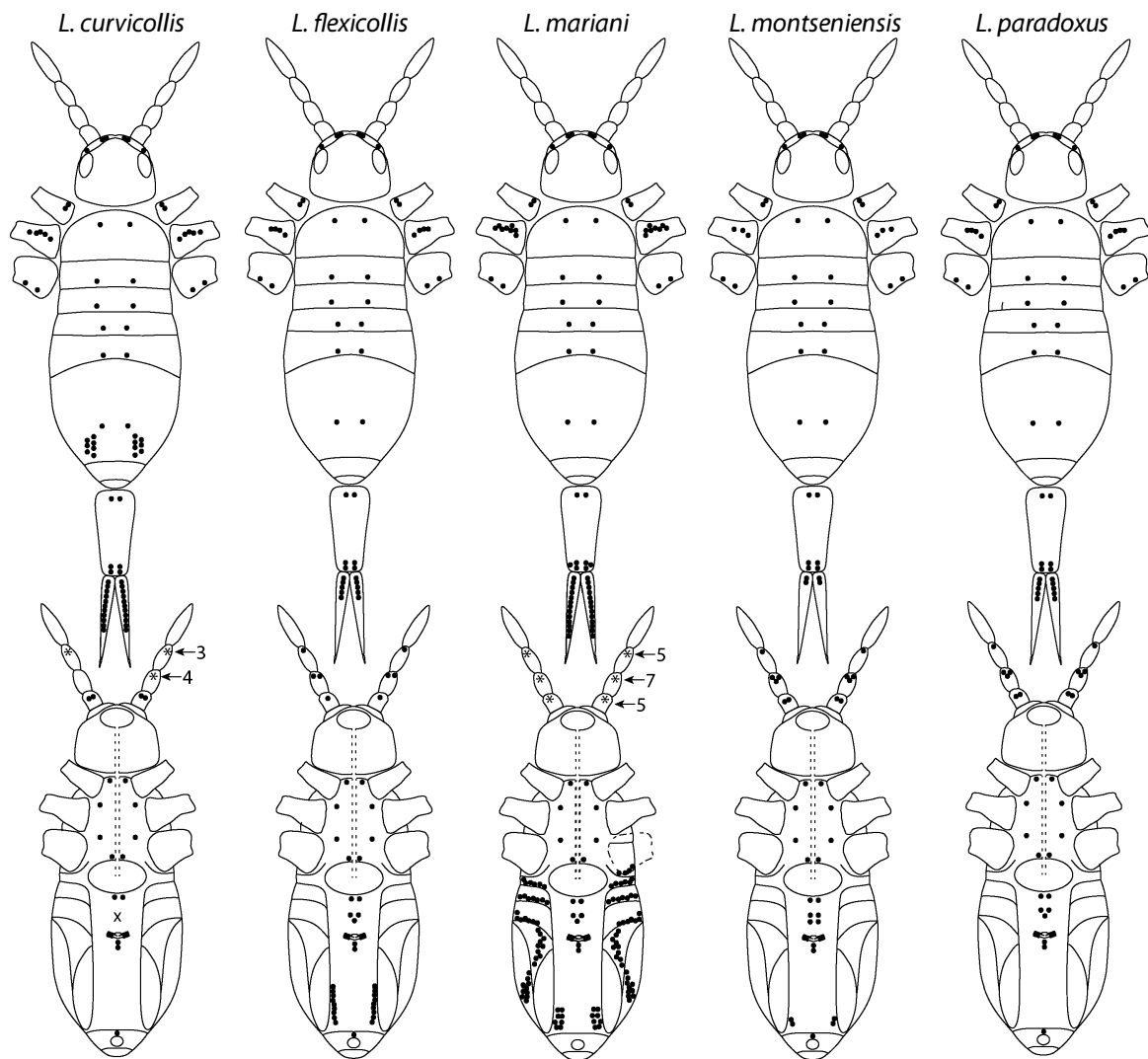


Fig. S3. Distribution of pseudopores (black dots) on dorsal, lateral and ventral positions in *Lepidocyrtus curvicollis*-group (species *L. curvicollis*, *L. flexicollis*, *L. mariani*, *L. montseniensis* and *L. paradoxus*. Asterisks indicate positions with more than 2 pseudopores; x in *L. curvicollis* indicates unknown pseudopores number in this position.

Cyphoderus gr. bidenticulati

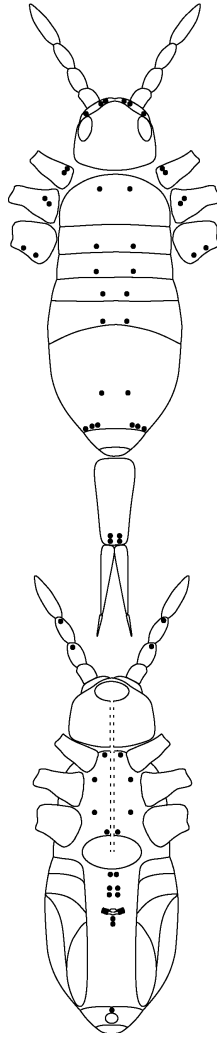


Fig. S4. Distribution of pseudopores (black dots) on dorsal, lateral and ventral positions in *Cyphoderus gr. bidenticulati*.