

Supplementary material

**Integrative taxonomy of the new millipede genus *Coxobolellus*, gen. nov.
(Diplopoda : Spirobolida : Pseudospirobolellidae), with descriptions of ten new species**

Piyatida Pimvichai^{A,F}, *Henrik Enghoff*^B, *Somsak Panha*^C and *Thierry Backeljau*^{D,E}

^ADepartment of Biology, Faculty of Science, Mahasarakham University, Mahasarakham 44150, Thailand.

^BNatural History Museum of Denmark, University of Copenhagen, Universitetsparken 15,
DK-2100 Copenhagen Ø, Denmark.

^CAnimal Systematics Research Unit, Department of Biology, Faculty of Science, Chulalongkorn University,
Bangkok 10330, Thailand.

^DRoyal Belgian Institute of Natural Sciences, Vautierstraat 29, B-1000 Brussels, Belgium.

^EEvolutionary Ecology Group, University of Antwerp, Universiteitsplein 1, B-2610 Antwerp, Belgium.

^FCorresponding author. Email: piyatida.p@msu.ac.th

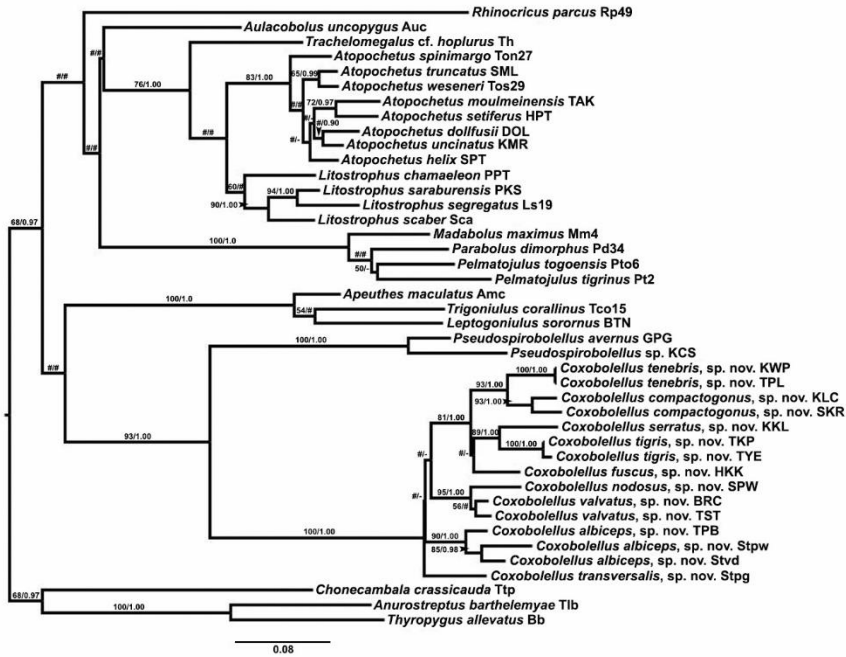


Fig. S1. Phylogenetic relationships of *Coxobolellus*, gen. nov. species based on maximum likelihood analysis (ML) and Bayesian Inference (BI) of 458 bp of *16S* rRNA. Numbers at nodes indicate branch support based on bootstrapping (ML) or posterior probabilities (BI). Scale bar: 0.08 substitutions per site. # indicates branches with <50% ML bootstrap support and <0.90 Bayesian posterior probability. –, branch not shown in the BI tree.

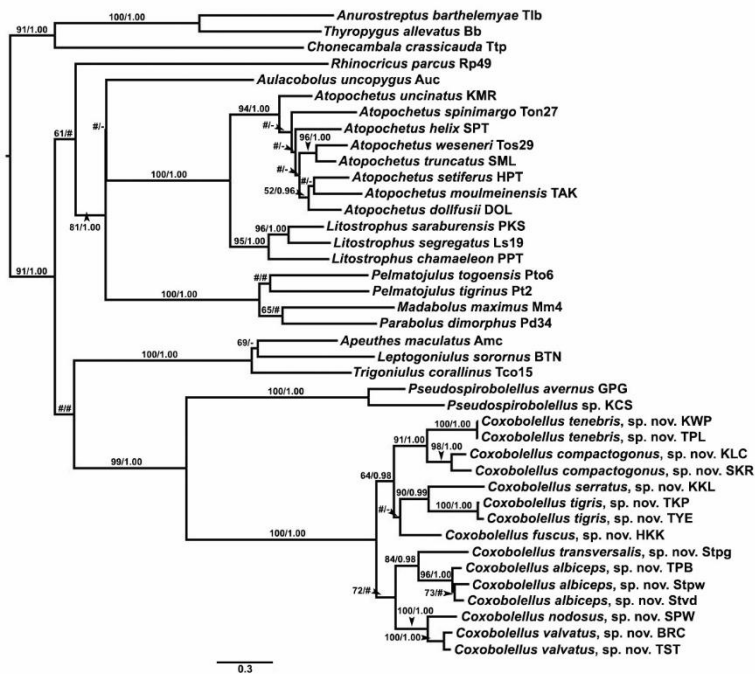


Fig. S2. Phylogenetic relationships of *Coxobolellus*, gen. nov. species based on maximum likelihood analysis (ML) and Bayesian Inference (BI) of 1118 bp in the concatenated *COI* + *16S* rRNA alignment. Numbers at nodes indicate branch support based on bootstrapping (ML) or posterior probabilities (BI). Scale bar: 0.3 substitutions per site. # indicates branches with <50% ML bootstrap support and <0.90 Bayesian posterior probability. -, branch not shown in the BI tree.