

Supplementary Material

Characteristics of lipid droplets and the expression of proteins involved in lipolysis in the murine cervix during mid-pregnancy

Longlong Tao^A, Hongyan Zhang^A, Hongmei Wang^A, Liuhui Li^A, Libo Huang^A, Feng Su^A,
Xuejun Yuan^B, Mingjiu Luo^{A,C} and Lijiang Ge^{A,C}

^ACollege of Animal Science and Technology, Shandong Agricultural University, N0.61, Daizong Street, Taian, Shandong Province, 271018, P.R. China.

^BCollege of Life Science, Shandong Agricultural University, N0.61, Daizong Street, Taian, Shandong Province, 271018, P.R. China.

^CCorresponding author. Email: glj@sdau.edu.cn; luo9616@163.com

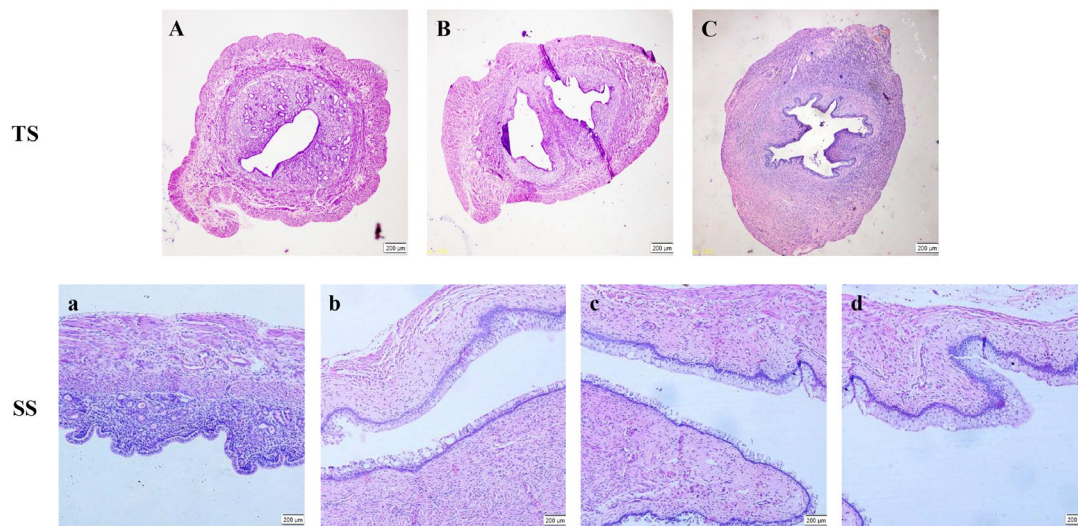


Fig. S1. Light micrographs of sagittal and transverse sections of nonpregnant murine cervix and uterus. Transverse sections (TS) reveal glandular tube in subepithelia of uterine canal (A), but no glandular tube in subepithelia of dual (B) and single (C) cervical canal. Sagittal sections (SS) reveal single columnar epithelia in uterine canal (a) and endocervical canal (b); but stratified squamous epithelia in external os (c) and vagina (d). Scale bar = 200 μm. HE.

