

Supplementary Material

Inducible heat shock protein A1A (HSPA1A) is markedly expressed in rat myometrium by labour and secreted via myometrial cell-derived extracellular vesicles

M. F. Russell^{A,B}, G. C. Bailey^{B,C}, E. I. Miskiewicz^{B,C} and D. J. MacPhee^{B,C,D}

^ADepartment of Anatomy, Physiology and Pharmacology, College of Medicine, University of Saskatchewan, Saskatoon, SK, S7N 5E5, Canada.

^BOne Reproductive Health Research Group, University of Saskatchewan, Saskatoon, SK, S7N 5B4, Canada.

^CDepartment of Veterinary Biomedical Sciences, Western College of Veterinary Medicine, University of Saskatchewan, Saskatoon, SK, S7N 5B4, Canada.

^DCorresponding author. Email: d.macphee@usask.ca

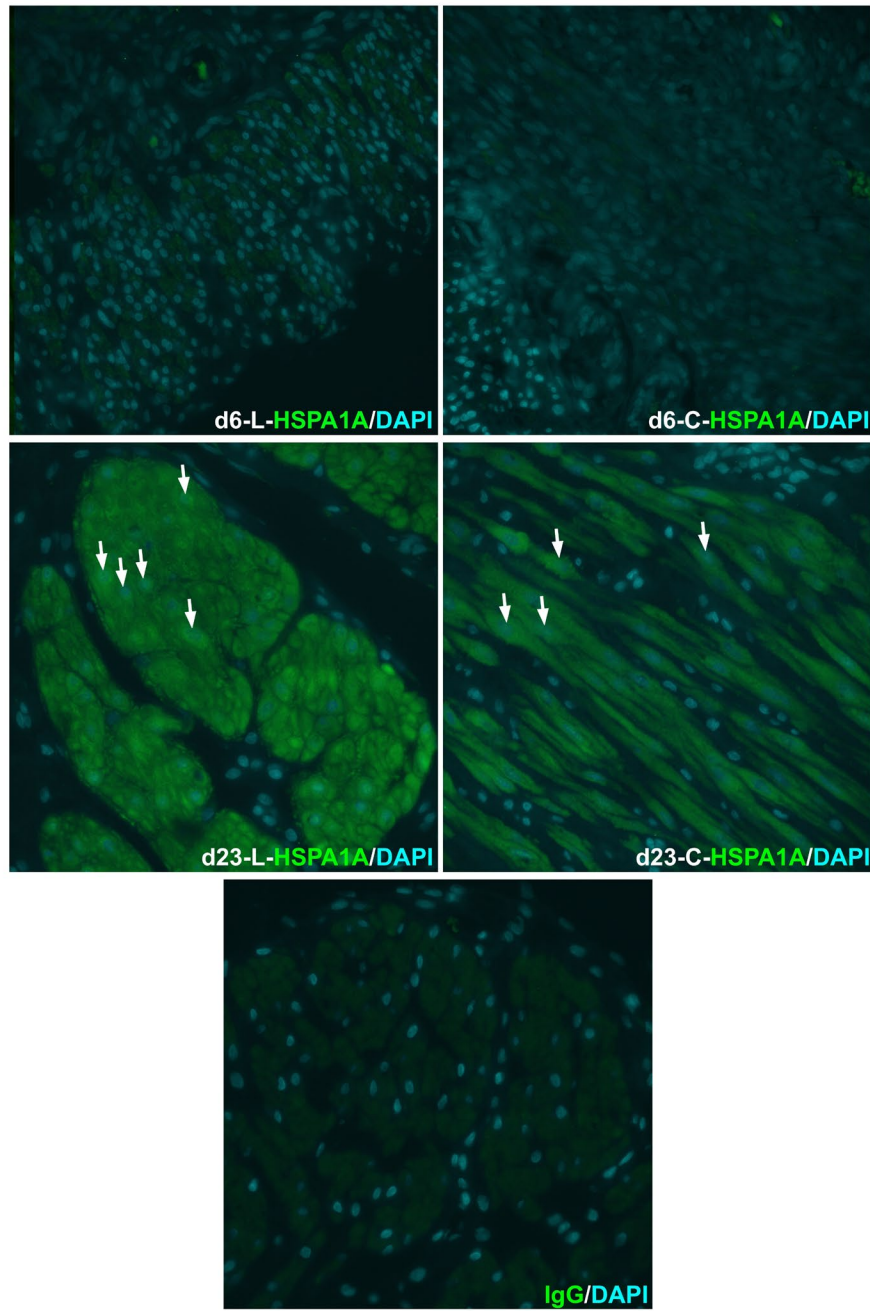


Fig. S1. Immunofluorescence detection of HSPA1A in the nuclei of myocytes from the longitudinal and circular muscle layers of the rat myometrium. Representative images of circular (C) and longitudinal (L) layers at day (d) 6 and d23 of gestation are shown. Detection of HSPA1A became prominent in cytoplasm and nuclei of myocytes during late pregnancy, labour and post-partum. Arrows indicate HSPA1A/DAPI nuclear localization in some myocytes. HSPA1A, inducible 70 kDa heat shock protein; DAPI, 4',6-diamidino-2-phenylindole; IgG, Non-specific rabbit IgG. Scale bar = 50 μ m.