

**Supplementary material**

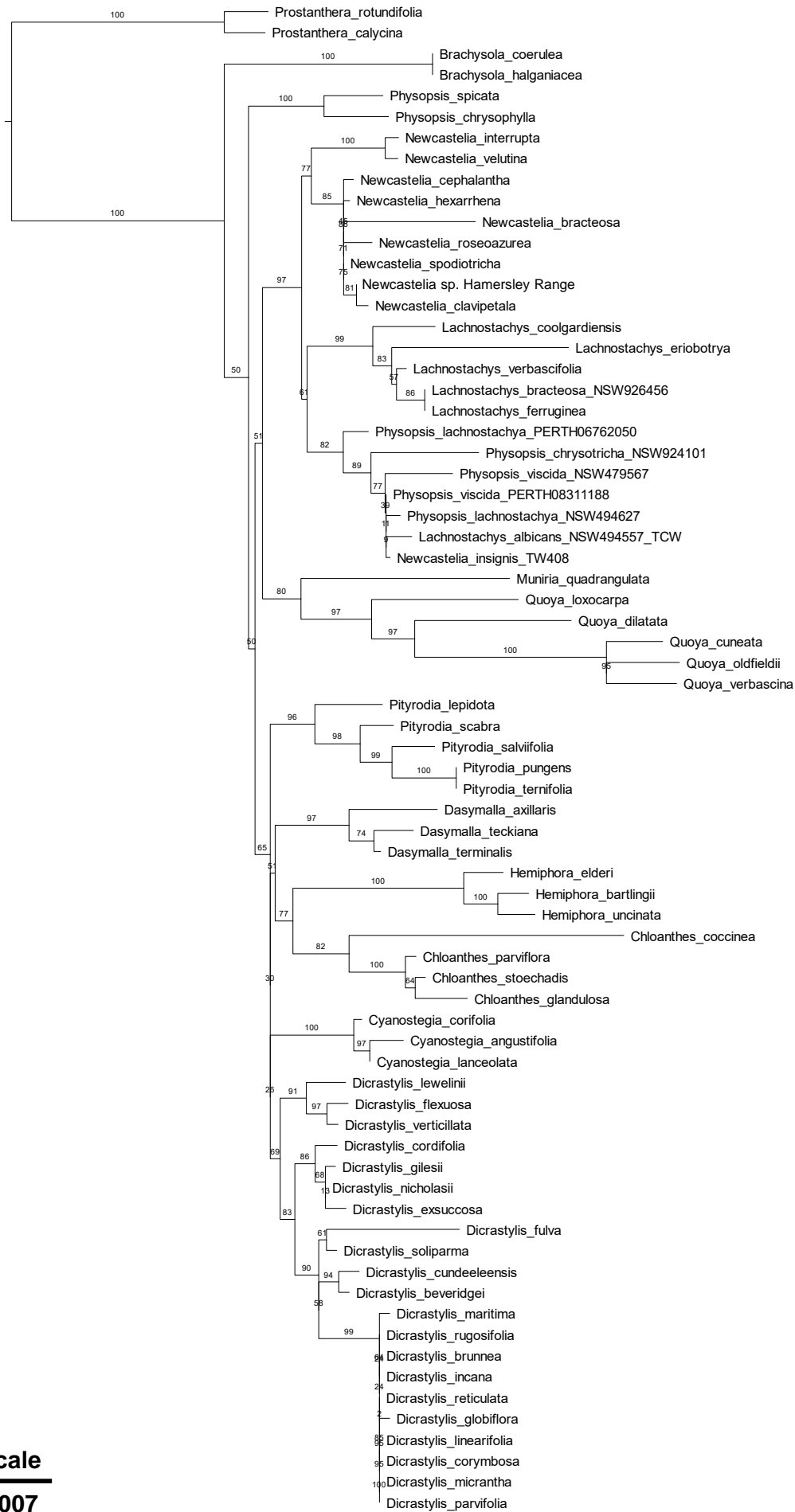
**A new genus and species for Chloantheae (Lamiaceae)**

*Trevor C. Wilson*<sup>A,B,C</sup>, *Evelyn A. Radunz*<sup>B</sup>, *Stephanie Chen*<sup>A,B</sup>, *Barry J. Conn*<sup>B</sup> and *Murray J. Henwood*<sup>B</sup>

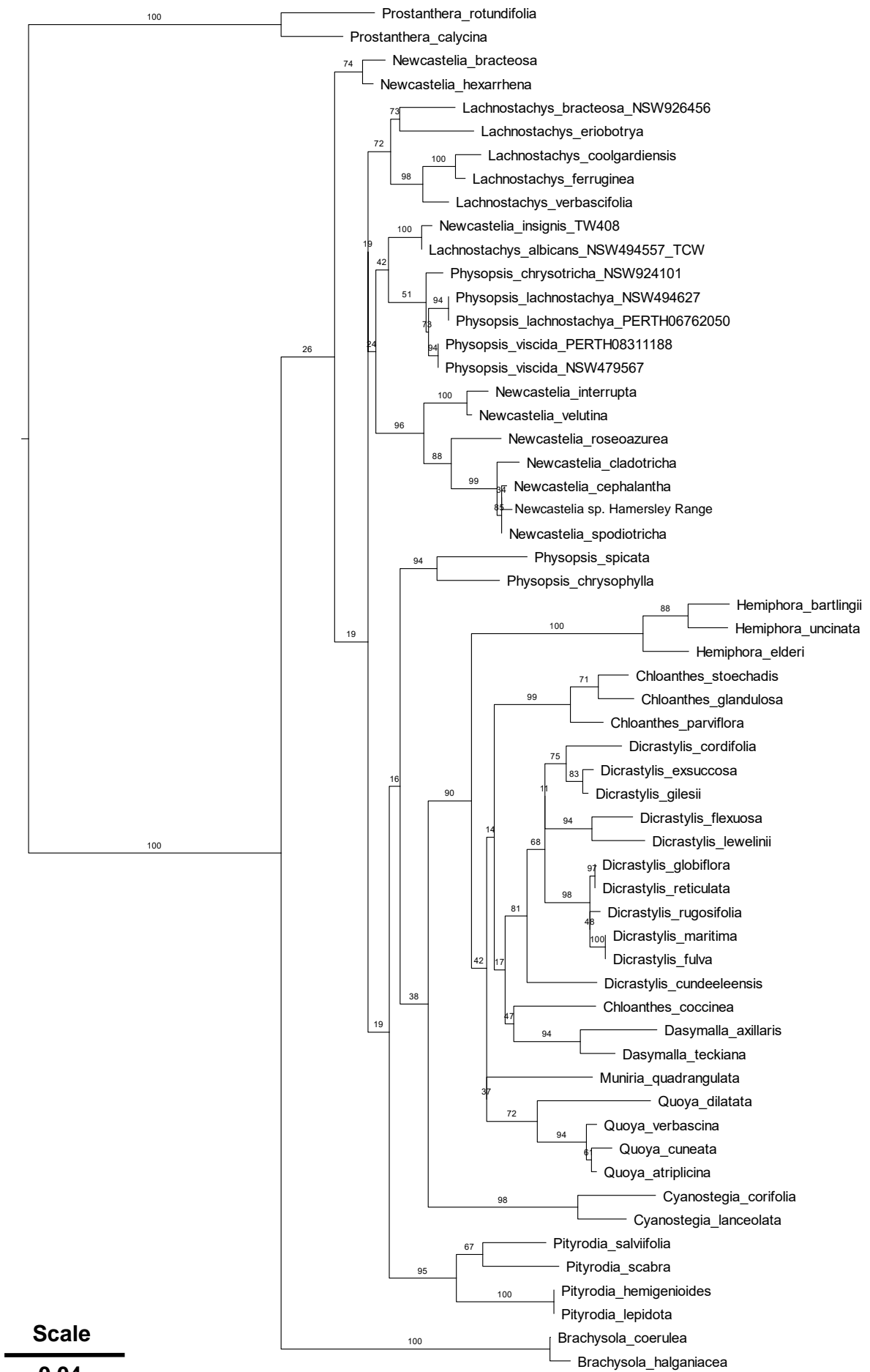
<sup>A</sup>National Herbarium of New South Wales, Australian Institute of Botanical Science,  
Royal Botanic Gardens & Domain Trust, Mrs Macquaries Road, Sydney, NSW 2000, Australia.

<sup>B</sup>School of Life and Environmental Sciences, Heydon Laurence Building, Science Road,  
University of Sydney, NSW 2006, Australia.

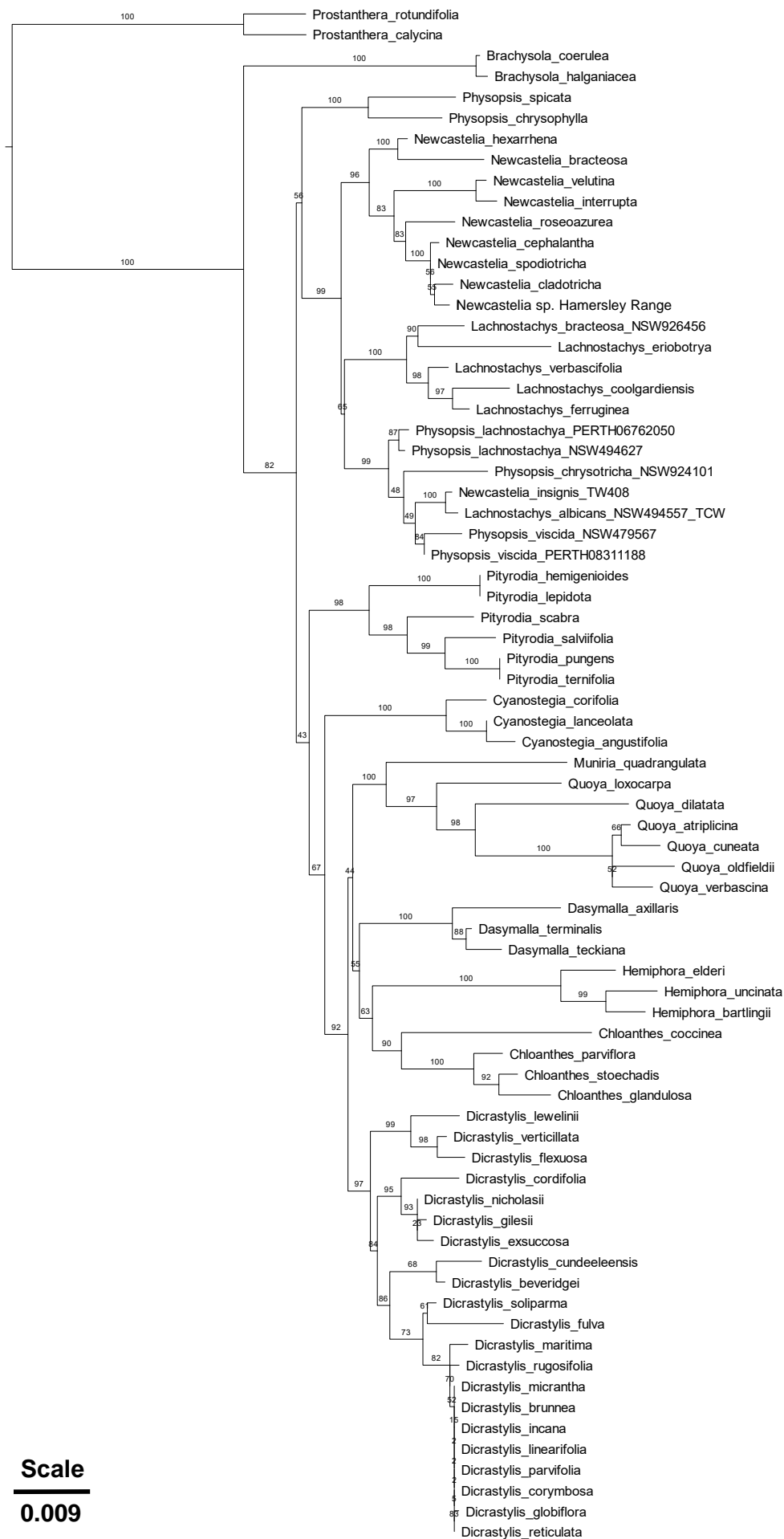
<sup>C</sup>Corresponding author. Email: [trevor.c.wilson@rbgsyd.nsw.gov.au](mailto:trevor.c.wilson@rbgsyd.nsw.gov.au)



**Fig. S1.** Phylogram for *Chloanthae* based on RAxML Maximum likelihood analysis of the aligned nucleotide sequence of the chloroplast regions *ndhF* and *psbD-trnT*. Bootstrap values are indicated above branches.



**Fig. S2.** Phylogram for Chloantheae based on RAxML maximum likelihood analysis of the aligned ITS nucleotide sequence matrix. Bootstrap values are indicated above branches.



**Fig. S3.** Phylogram for Chloanthae based on RAxML Maximum likelihood analysis of the concatenated ITS, *ndhF*, and *psbD-trnT* nucleotide sequence matrix. Bootstrap values are indicated above branches.