

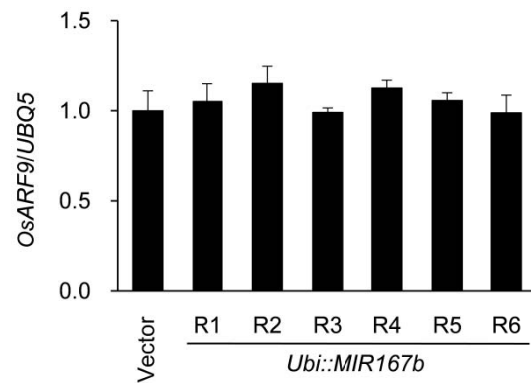
Supplementary material

Fig. S1. Expression level of *OsARF9* in different transgenic lines. The mRNA levels of *OsARF9* in the control (vector) line and different *35S::MIR167b* lines (R1–R6) were analysed by quantitative RT-PCR. The expression value in the control line was used as a calibrator, and the relative expression data were normalised to rice *UBQ5*. Error bars indicate standard deviation ($n = 4$ PCR replicates).