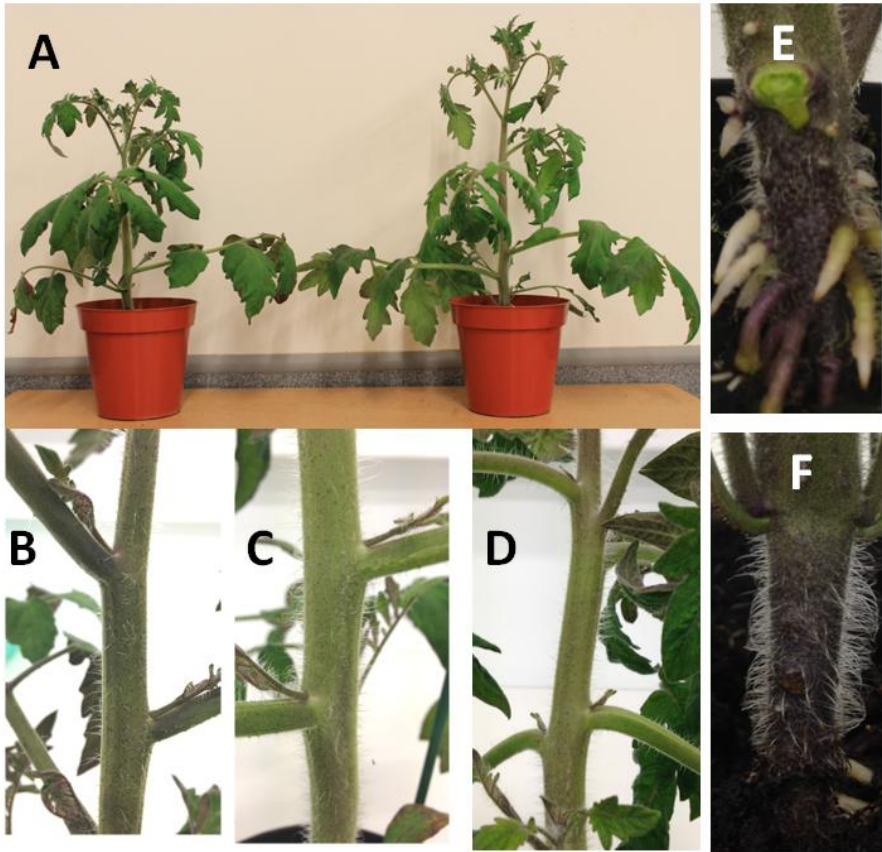


### Supplementary Material

**Table S1. Morphological and developmental characteristics of tomato plants grown in continuously moderate (60%) and high (90%) RH, in growth chambers for 20 days or transferred from 60 RH to 90%RH (60→90) after development. Leaf curvature was measured 2 days after transfer from 60% to 90% on leaf number 4 (counted from the base of the plant)**

RH (%)	Plant height (cm)	Leaf length (3 <sup>rd</sup> leaf) (cm)	Time to visible inflorescence (days)	Number of adv. roots	Leaf curvature (degrees)
90	36,3 a	30,1 a	14,3 a	5,5	
60	27,0 b	26,4 b	15,0 a	0	62 a
60→90					87 b



**Fig. S1.** Tomato plants grown at different RH regimes: Continuous moderate (60%, left) and high RH (90%, right) (A). Leaf angle in plants developed at moderate RH (B) high RH (C) and in plants developed at moderate RH and treated with ethephon (D). Adventitious root formation in stems from high RH (E) and lack of adventitious root formation in stems from moderate grown RH (F).