

Supplementary Material

The seed-borne *Southern bean mosaic virus* hinders the early events of nodulation and growth in *Rhizobium*-inoculated *Phaseolus vulgaris* L.

Mariadaniela López^A, Nacira Muñoz^{B,C}, Hernan Ramiro Lascano^{B,C} and María Luisa Izaguirre-Mayoral^{D,E}

^AUniversidad Centroccidental Lisandro Alvarado, Postgrado de Agronomía, Laboratorio de Virología, Barquisimeto 03023, Venezuela.

^BInstituto de Fisiología y Recursos Genéticos Vegetales, Centro de Investigaciones Agropecuarias – Instituto Nacional de Tecnología Agropecuaria, 5119 Córdoba, Argentina.

^CCátedra de Fisiología Vegetal, Facultad de Ciencias Exactas Físicas y Naturales, Universidad Nacional de Córdoba, Avenida Vélez Sársfield 1611 Córdoba, Argentina.

^DInstituto Venezolano de Investigaciones Científicas, Centro de Microbiología y Biología Celular, apartado postal 21827 Caracas 1020-A, Venezuela.

^ECorresponding author. Email: mlizaguirre@gmail.com

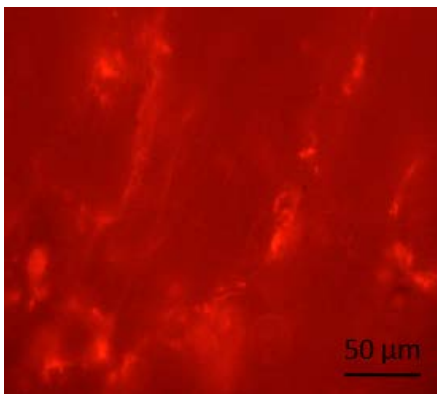


Fig. S1. “*in situ*” immunofluorescence detection of SBMV proteins in the elongating zone of the radical of *P. vulgaris*, 24 h after the pre-infection by the SMBV. The virus protein was labelled with the policlonal antiserum against SBMV (1:200).



Fig. S2. Post- SBMV infected (left) and pre-SBMV infected black bean (right).



Fig. S3. (A) root nodulation in post-SBMV infected plant; (B) root nodulation in pre-SBMV infected plant; and (C) root nodulation in healthy plant.