

## Supplementary Material

### Induction of the heat shock response in *Arabidopsis* by heat shock protein 70 inhibitor VER-155008

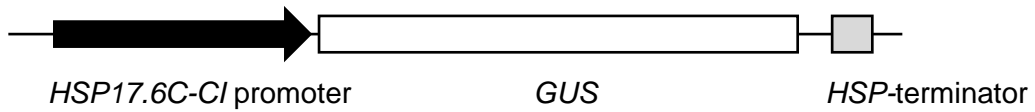
*Erina Matsuoka*<sup>A</sup>, *Naoki Kato*<sup>B,C</sup> and *Masakazu Hara*<sup>A,B,C,D</sup>

<sup>A</sup>Research Institute of Green Science and Technology, Shizuoka University, 836 Ohya, Shizuoka, Shizuoka 422-8529, Japan.

<sup>B</sup>Graduate School of Science and Technology, Shizuoka University, 836 Ohya, Shizuoka, Shizuoka 422-8529, Japan.

<sup>C</sup>R & D Center, Menicon Co., Ltd, 5-1-10 Takamoridai, Kasugai, Aichi 487-0032, Japan.

<sup>D</sup>Corresponding author. Email: [hara.masakazu@shizuoka.ac.jp](mailto:hara.masakazu@shizuoka.ac.jp)

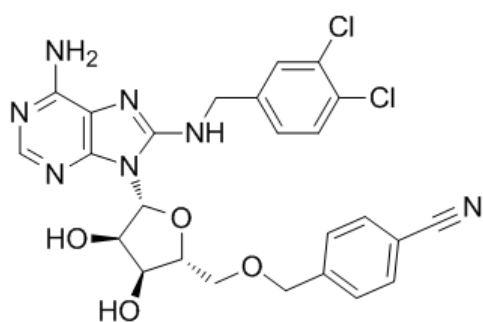


**Figure S1.** A scheme of the HSP17.6C-CI ProGUS construct. The  $\beta$ -glucuronidase (*GUS*) gene was controlled by the *HSP17.6C-CI* promoter.

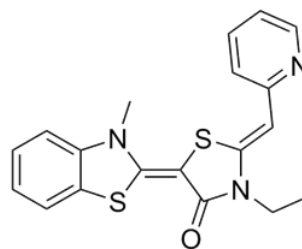
Title: Induction of the heat shock response in *Arabidopsis* by heat shock protein 70 inhibitor VER-155008

Authors: Matsuoka E, Kato N, Hara M\*

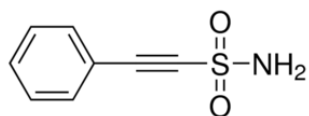
\*hara.masakazu@shizuoka.ac.jp



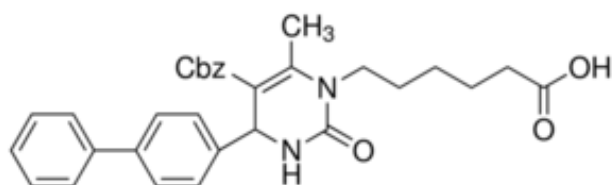
VER-155008



YM-08

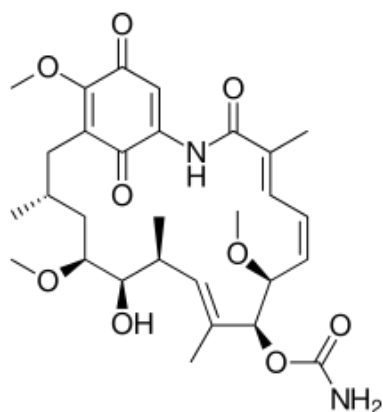


Pifithrin-μ

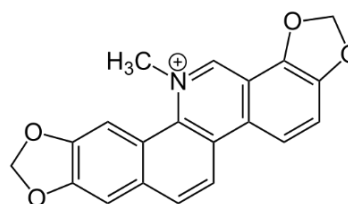


116-9e

*Plant chaperone inhibitors*



Geldanamycin



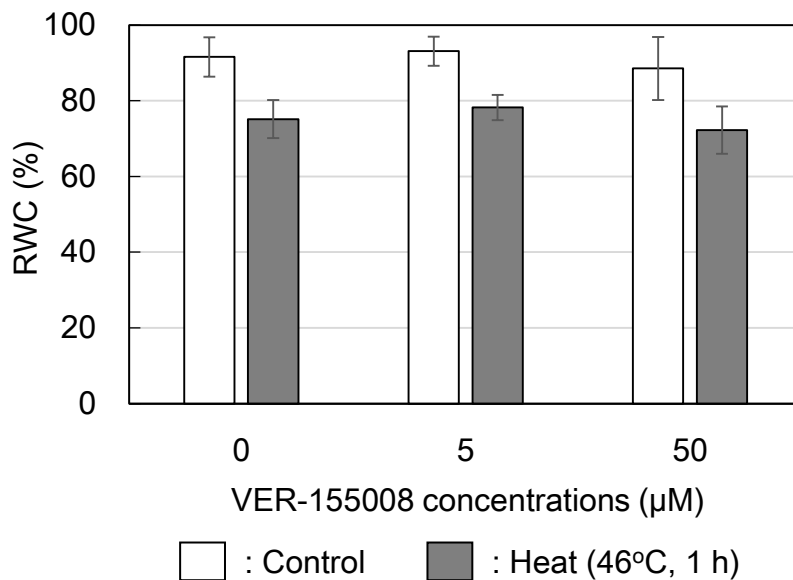
Sanguinarine

**Figure S2.** HSP70 inhibitors and plant chaperone inhibitors used in this study.

Title: Induction of the heat shock response in *Arabidopsis* by heat shock protein 70 inhibitor VER-155008

Authors: Matsuoka E, Kato N, Hara M\*

\*hara.masakazu@shizuoka.ac.jp



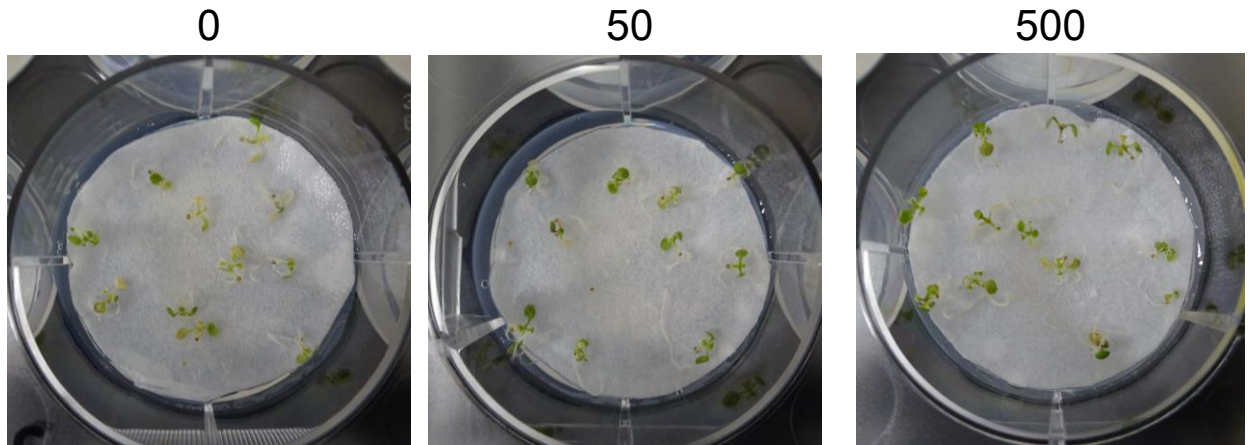
**Figure S3.** Relative water contents (RWCs) of *Arabidopsis* seedlings at 10 DAG in the same experimental conditions as in Fig. 4. The fresh, turgid, and dry weights of the seedlings were measured. RWCs were determined as the following equation.  $RWC = (\text{fresh weight} - \text{dry weight}) / (\text{turgid weight} - \text{dry weight})$ . Values and bars are means and SD (n=4).

Title: Induction of the heat shock response in *Arabidopsis* by heat shock protein 70 inhibitor VER-155008

Authors: Matsuoka E, Kato N, Hara M\*

\*hara.masakazu@shizuoka.ac.jp

VER-155008 concentrations ( $\mu\text{M}$ )



**Figure S4.** Photographs of *Arabidopsis* seedlings at 10 DAG in the same experimental conditions as in Fig. 4. Bar represents 1 cm.

Title: Induction of the heat shock response in *Arabidopsis* by heat shock protein 70 inhibitor VER-155008

Authors: Matsuoka E, Kato N, Hara M\*

\*hara.masakazu@shizuoka.ac.jp