

Supplementary Material

Harnessing leaf photosynthetic traits and antioxidant defence for multiple stress tolerance in three premium indigenous rice landraces of Jeypore tract of Odisha, India

Debabrata Panda^{A,B}, Biswajeet Mohanty^A, Prafulla K. Behera^A, Jijnasa Barik^A and Swati S. Mishra^A

^ADepartment of Biodiversity and Conservation of Natural Resources, Central University of Orissa, Koraput-764 021, Odisha, India.

^BCorresponding author. Email: dpanda80@gmail.com

Fig. S1 Dendrogram showing the percentage of similarity between the rice landraces with tolerant and susceptible check varieties using leaf phenotyping parameters under control (A), drought (B), salinity (C) and **submergence** (D) stress.

Table S1 Detail of studied genotypes with their accession number, origin, maturity duration and special character.

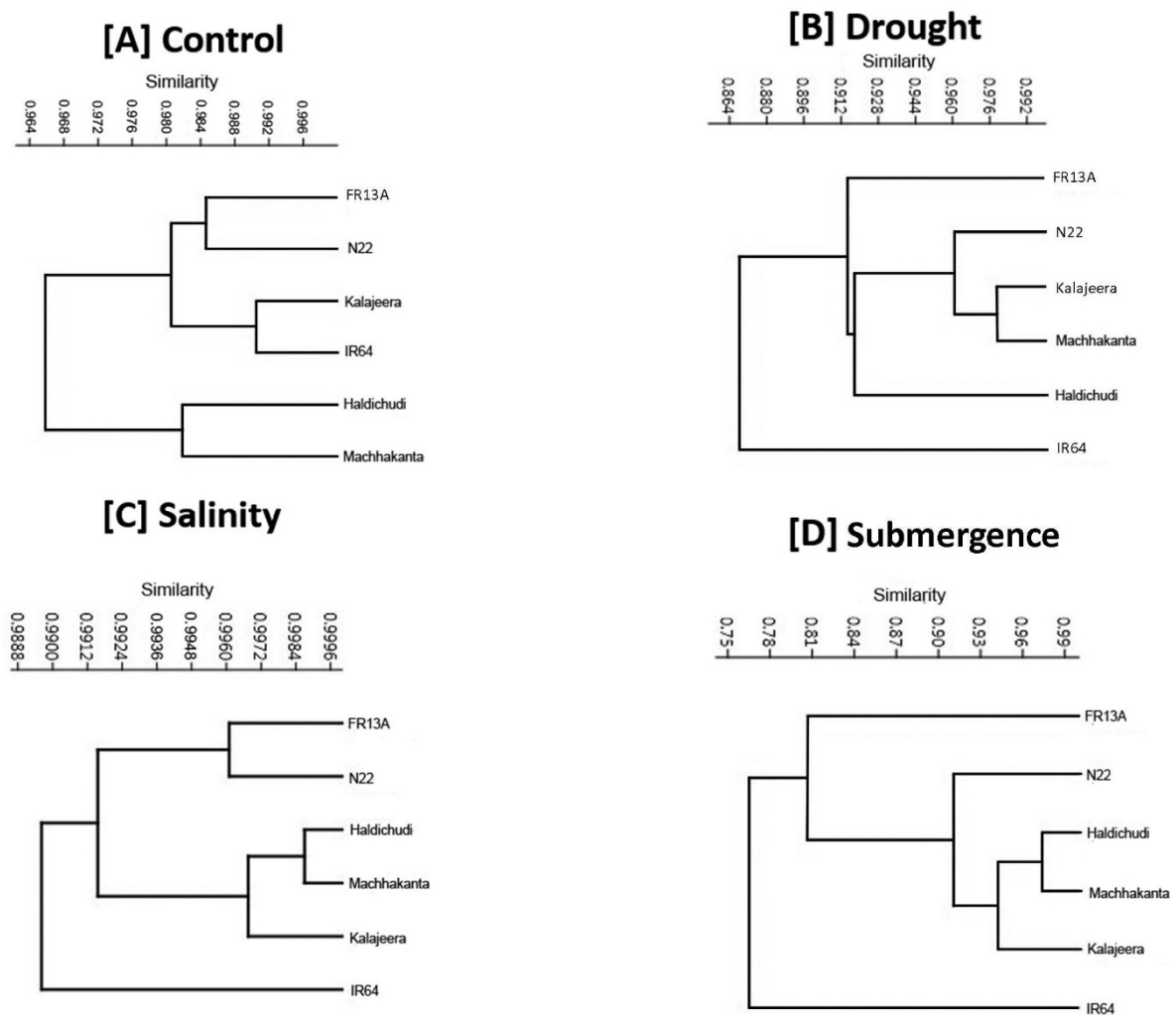


Fig. S1 Dendrogram showing the percentage of similarity between the rice landraces with tolerant and susceptible check varieties using leaf phenotyping parameters under control (A), drought (B), salinity (C) and **submergence** (D) stress.

Table S1 Detail of studied genotypes with their accession number, origin, maturity duration and special character.

Sl. No.	Accession Number	Variety	Origin	Maturity duration	Specific note
1	CUO024	Machakanta	Landraces of Koraput	135-145 days# (Long duration of maturity)	Popular traditional variety, Non sticky cooked rice, slender grain with yellow straw colour, tall plant type*, #.
2	CUO018	Haladichudi	Landraces of Koraput	125–135 days# (Medium duration of maturity)	Popular traditional variety, medium slender grain with deep yellow husk color, non-sticky cooked rice with tasty to eat*, #.
3	CUO036	Kalajeera	Landraces of Koraput	140–150 days# (Long duration of maturity)	Popular traditional variety, highly aromatic, short bold grain with black colour husk, tall plant type, non-sticky cooked rice and highly palatable*, #.
4	CUO132	IR 64	IRRI, Philippines	115 days# (Short duration of maturity)	Hybrid variety with high yield, rainfed lowland areas, semi dwarf, susceptible to abiotic stress such as drought, submergence and salinity **#.
5	CUO131	N 22	Eastern India	80-95 days # (Short duration of maturity)	Up land variety, deep-rooted, drought and salt tolerant aus rice cultivar, (a selection from 'Rajbhog'). #,**
6	CUO135	FR 13A	Orissa	155 days (Long duration of maturity)	Submergence tolerant variety having SUB 1 QTL (Pure line selection)**

*Arunachalam *et al.* (2006); #Mishra *et al.* (2018); **Singh *et al.* (2016)